

SWIMM – SWIMMING POOL PUMP

The Swimm range of water pumps from Speroni all come with a 2-year manufacturer's guarantee. They are used in both commercial and domestic applications in places such as private and public pools, water features and ponds.

The impellers and pump bodies are both made with thermoplastic with NBR mechanical seals and stainless steel shafts.

The Swimm range of pumps move fluids with temperatures between 5-35 degrees. It has an IP55 rated motor.

These pumps come with a filter basket that can be removed and inspection covers. There are four models in this range, the Swimm 500, Swimm 750, Swimm 1000 and the Swimm 1500. They are all 230volt.

The Swimm 500 comes with a flow of 250 litres per minute. It has a dry weight of 8.1kg.

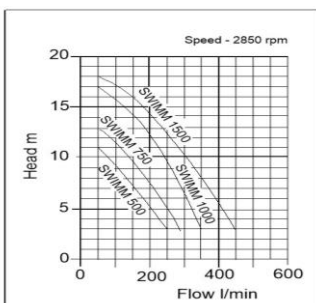
The Swimm 750 comes with a flow of 275 litres per minute. It has a dry weight of 9.5kg.

The Swimm 1000 comes with a flow of 350 litres per minute. It has a dry weight of 11.3kg.

The Swimm 1500 comes with a flow of 450 litres per minute. It has a dry weight of 14.9kg.

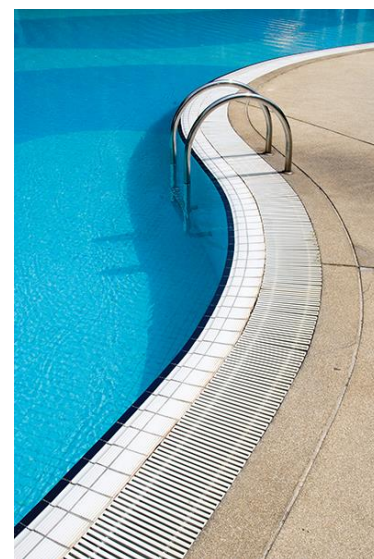


SWIMM 500



Suitable for:

- Swimming pools
- Water features / Ponds
- Domestic
- Commercial
- Public Pools



Model	Inlet ABS (mm)	Outlet (mm)	kW	Volt	Flow (l/min)	Head (Mtrs)	W x l x h (mm)	Dry Weight	Packing Weight
Swimm 500	48.3	48.3	0.37	230	250	11	160x465x234	8.10	8.90
Swimm 750	48.3	48.3	0.55	230	275	13	220x502x270	9.50	10.30
Swimm 1000	48.3	48.3	0.75	230	350	17	220x502x270	11.30	12.20
Swimm 1500	60.4	60.4	1.10	230	450	18	238x520x331	14.90	15.90